

# CÉILÍ COTTAGE

A Place for Friends to Gather

*Active  
Generations*  
OPPORTUNITIES FOR A LIFETIME

The Céilí Cottage Adult Day Program at Active Generations offers specialized care for individuals with advanced Alzheimer's and other dementias in a home-like setting.

With a 1:4 staff-to-participant ratio, we provide personalized support through collaboration with caregivers and healthcare providers.

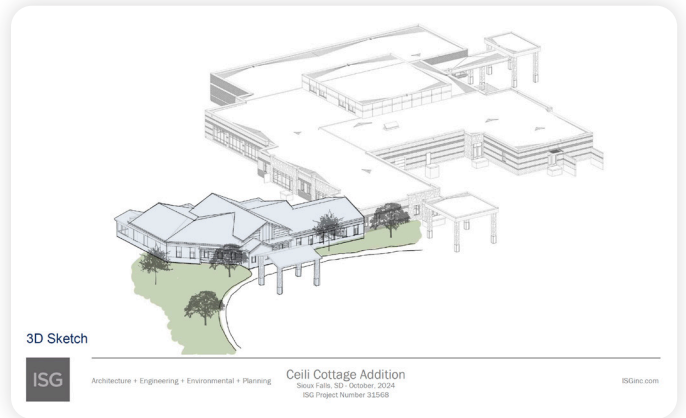
Since 2013, Céilí Cottage has offered home-like care in our original cottage on West Avenue. However, with limited space and a single bathroom, we can no longer meet growing demands.

A new facility at our East Side campus will provide a more efficient layout, improving staff support and program capacity, while preserving our welcoming, home-like care approach.

**Expanding the Céilí Cottage Adult Day Program will allow us to serve 50% more individuals with Alzheimer's and dementia in a supportive, small setting, while also meeting the growing needs of our men's program.**



Image for reference only to show design intent.



## CAPITAL CAMPAIGN PROJECT ESTIMATES

Building Costs (5363sq. Ft. x \$340)	<b>\$1,823,420</b>
Additional Building Costs (Covered Entrance, Outdoor Activity Areas)	<b>\$190,000</b>
Architect Fees & Expenses	<b>\$367,684</b>
Infrastructure Expenses	<b>\$200,000</b>
Furniture & Fixtures	<b>\$75,000</b>
Contingency Fees	<b>\$221,342</b>

**TOTAL PROJECT COST     \$2,877,446**

A grant from the state of South Dakota has been secured for \$420,000 for the Céilí Cottage Expansion.

## CURRENT CÉILÍ COTTAGE



## ELEVATED SPACES For All Generations

Without care options like Céilí Cottage, families often face the choice between costly home care or early institutional placement for loved ones with Alzheimer's and dementia.

Céilí Cottage offers affordable, home-like daytime care, giving caregivers respite and helping them keep loved ones at home longer. This support reduces stress, promotes health, and strengthens families and the community.

Research shows that our intimate setting reduces social inhibitions and challenging behaviors common in larger programs.

Expanding Céilí Cottage will allow us to serve 12 participants (up from 8) and increase Men's Program capacity from 12 to 18, addressing the growing need for support for men with memory loss.

**Active  
Generations**  
OPPORTUNITIES FOR A LIFETIME

To learn more, please contact:

**WENDY MCDONNELL**

(605) 275-7680 | [wmcdonnel@activegen.org](mailto:wmcdonnel@activegen.org)

[activegenerations.org](http://activegenerations.org)